

SHIFT YOUR EXPECTATIONS

You can't teach an old Orbi new tricks.
But we can!

Our new Shifter Protocol allows you to analyze charge variants on your standard Thermo Scientific QE and Lumos instruments. Want to run top-down analysis of charge variants on your Lumos? Now you can do that too!

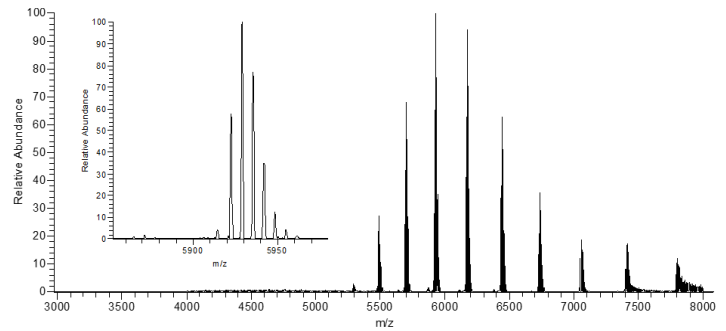
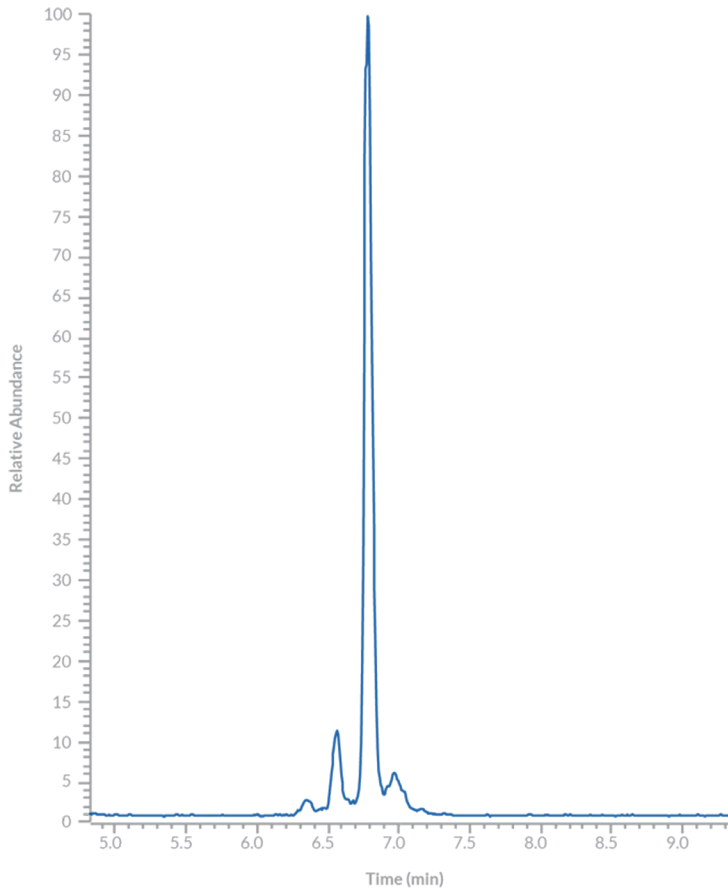
Upgrade your mass spec with **ZipChip®** and give it some zip!

ZipChip prepares and separates a wide range of biological samples, then electrosprays them into your mass spec for analysis. Just clip it on! The process takes as little as three minutes, and results in better separation quality than most LCs in a fraction of the time.

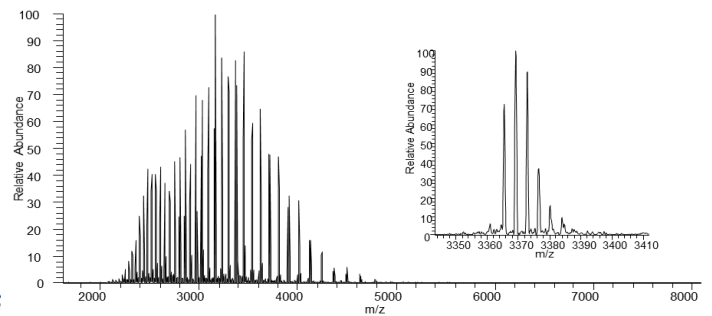


SHIFT YOUR EXPECTATIONS

Get the same awesome charge variant separation you'd expect from ZipChip, but with charge state within the range of your QE or Lumos!

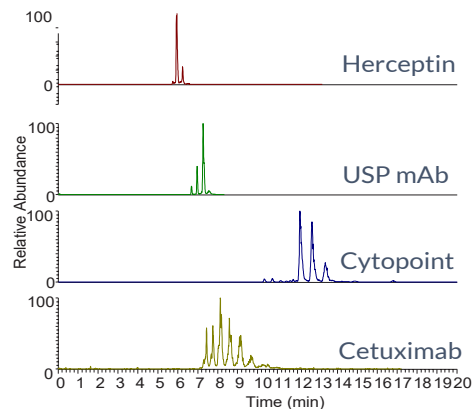


NIST mAb without Shifter



NIST mAb with Shifter

**This new method
applies to many
antibodies!**



ZipChip@908devices.com | www.908devices.com

ZipChip is for Research Use Only (RUO)

ZipChip is subject to export controls including those of the Export Administration Regulations of the U.S. Department of Commerce, which may restrict or require licenses for the export of product from the United States and their re-export to and from other countries. Patented technology www.908devices.com/patents. © 2019 908 Devices. ZipChip 5-19